

An aerial photograph of a schoolyard. In the center, a large group of children are standing on the grass, forming the word 'LOVE' in large, blocky letters. To the left of the 'LOVE' letters, a long line of children stretches across the yard. In the background, there is a large red building, likely a school. The entire image has a red tint. The text 'PSALM 145:4' is at the top, followed by the main title 'TRANSFORM TOMORROW TODAY' in large white letters. Below that is the subtitle 'Impacting the Faith of the Next Generation'. At the bottom, a dark red banner contains the text 'CAMPAIGN PROPOSAL' in white.

PSALM 145:4

TRANSFORM *TOMORROW TODAY*

Impacting the Faith of the Next Generation

CAMPAIGN PROPOSAL

Impacting the Faith of the Next Generation

Founded in 1950 by the Lafayette Christian Reformed Church with just three teachers and 46 students, our school has grown into a vibrant community committed to fostering lifelong learning and spiritual growth. At Lafayette Christian School, our mission is to excel in Christ-centered education, equipping each unique child to love and serve God throughout their lives. Our approach involves embedding scripture and Bible lessons across academic subjects, while partnering with families to nurture children who are devoted to God, dedicated to serving others, and capable of reaching their full potential.



More Than Academics

At Lafayette Christian School, we view education as a transformative journey that extends beyond academics. Our mission is to equip students to be agents of Christ's reconciliation in a world that often feels broken. Embracing Christ's call to transform our lives, we believe that a Christian school's role is to partner with parents in nurturing the next generation of Christ-centered leaders. By integrating faith with learning, we prepare our students to lead with compassion and integrity, empowering them to effect positive change and embody the principles of reconciliation and renewal in all aspects of their lives.

God's Abundant Blessing

Lafayette Christian School is experiencing a period of dynamic growth, with a remarkable 40% increase in enrollment since 2021. This surge in student numbers reflects the increasing accessibility and appeal of Christian education in Indiana. Thanks to the Indiana Choice Scholarships, which support over 90% of our families by covering 80-90% of tuition costs, more families than ever are able to benefit from a Christ-centered education. However, this rapid expansion brings new challenges, as we find ourselves running out of space to accommodate the growing needs and interests of our students.

To continue providing an exceptional educational experience, we are embarking on a three-phase expansion project. This expansion aims to enhance our facilities and resources, maximizing our students' potential and supporting their academic and personal growth. By investing now, we're addressing current needs and paving the way for future generations to enjoy a vibrant learning community.



Our Three-Fold Vision for LCS's Future

Phase 1: North Classrooms

We will add a two-story, 12,000 square foot building featuring five classrooms, a dedicated music room, and additional parking. This expansion underscores our commitment to providing an excellent educational environment for all students.

Phase 2: South Classrooms

We will upgrade the southern section of our building with a new two-story, 13,300 square foot addition. This will include a cafeteria for dining and community events, plus six new classrooms to enhance our learning environment.

Phase 3: West Classrooms and Offices

We will renovate the original portion of the building which includes three classrooms, upgrade our office spaces, and create a new entrance. This phase will modernize our facilities, making the environment more efficient and welcoming for students and staff.

Project Timeline: Phase 1 is scheduled to be completed and ready for occupancy at the start of the 2026-2027 school year



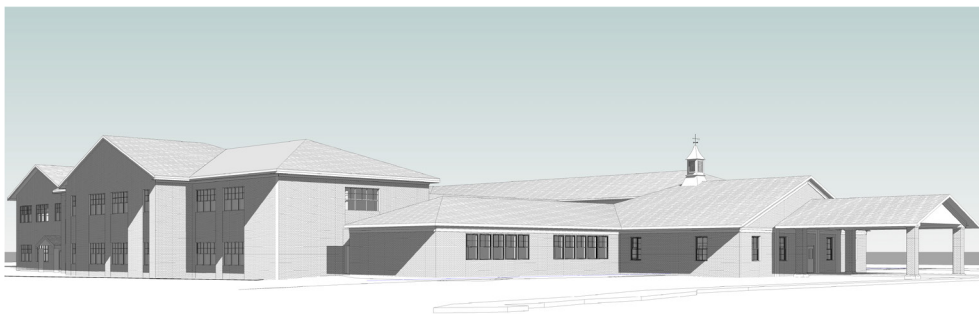
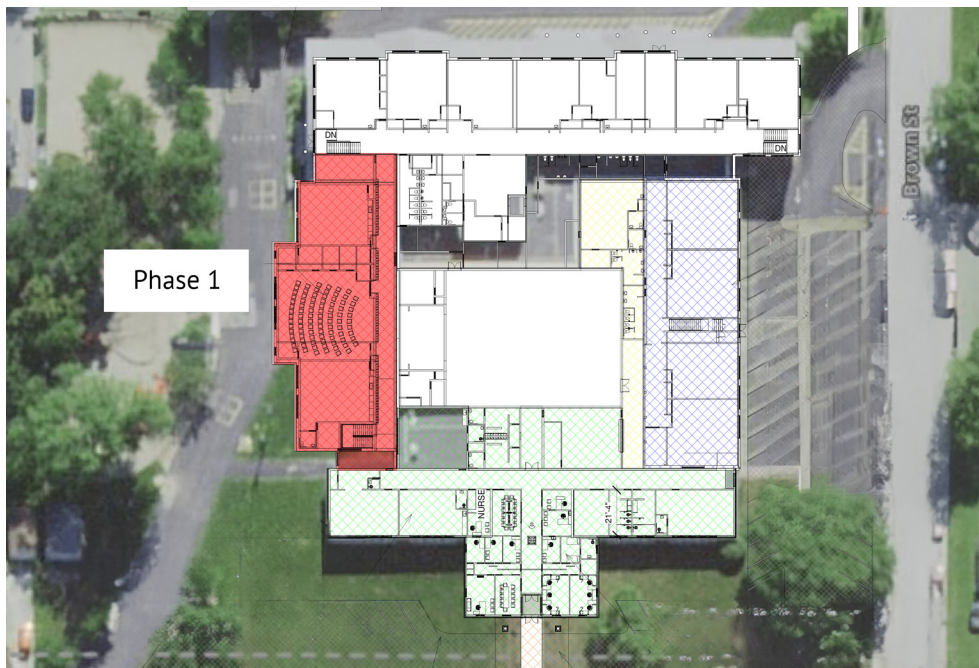
Phase 1: North Classroom Addition

The Board's top priority is the North classroom addition, a crucial step in our expansion plans. This project will include:

- Classrooms to provide our students with additional space and individualized attention
- A well-equipped music room to foster the artistic talents of our students
- Additional parking spaces to better accommodate our growing community

By adding these classrooms and facilities, we will free up space in the southern part of our building, currently used for band and music, which will be repurposed to build a new cafeteria in Phase 2.

This expansion represents a significant investment in our students' future, ensuring they receive the best possible learning experience. It reaffirms our commitment to "transforming tomorrow today" by providing a more enriching and supportive environment. The design and construction costs for Phase 1, which will also help kick-start Phase 2, are projected to be \$7.0 million. This investment is essential for continuing to meet the growing needs of our students and maintaining our high standards of education.



Photos: Lauren Koleff Photography

Leadership

Current Board Members

Luke Versprille
President

Kristin Mueller
Vice President

Mitch Tuinstra
Secretary

Gary Leung
Treasurer

Keith Int Veld
Tuition Chair

Terry Gilbert

Erica Pence

Paul Van Dokkenburg

Greg Veldman

Capital Campaign Team

Paul and Ashby Van Dokkenburg
Chairs

David & Julie Kensinger
Spiritual Emphasis Chairs

Mike Zientara
Major Gifts Chair

Jennifer White
Marketing & Communications Chair

Erica Pence
Board Representative

Megan DeYoung
*Director of Advancement
General Gifts & Events Chair*

Michelle Tuinstra
Interim Principal

Facilities Expansion & Improvement Committee

Greg Veldman
Chair

Seth Graves

Paul Van Dokkenburg

Luke Versprille

Brett Winger